



©2019 - EN

elicio
BY nethys



International producer
of renewable energy

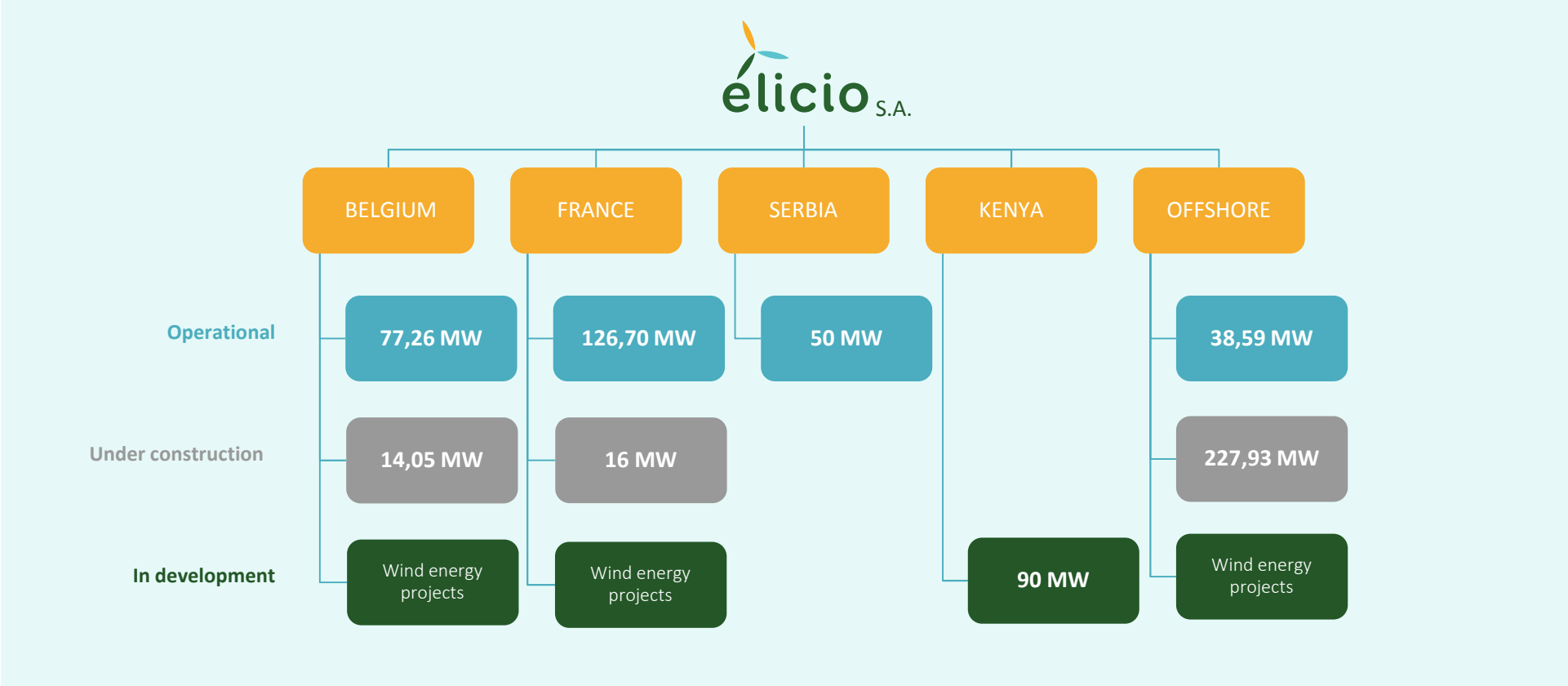
ELICIO IS ACTIVE AT EVERY STAGE OF A PROJECT:

- screening of new sites
- project development
- engineering
- financing
- construction
- operations
- repowering





WIND ENERGY: AN INDUSTRIAL EXPERTISE





WIND ENERGY, ONSHORE

32 operational wind farms in **Belgium, France** and **Serbia**

- **BELGIUM** : 16 operational wind farms with a gross output of **77.26 MW**
- **SERBIA**: 2 operational wind farms with a gross output of **50 MW**
- **FRANCE**: 14 operational wind farms with a gross output of **126.70 MW**

1 wind farm under development in **Kenya**

- **KENYA**: 1 wind farm of **90 MW**

A portfolio of wind energy projects in development

- **ONSHORE** : in Belgium and France

IN TOTAL:

THE CURRENT WIND FARMS GENERATE	548,750	MWh/YEAR GROSS
TOTAL INVESTED (GROSS) OUTPUT	253.96	MW
ELICIO POWERS THE EQUIVALENT OF	172,900	HOUSEHOLDS PER YEAR



WIND ENERGY, OFFSHORE

1 operational wind farm in the **Belgian North Sea**

✈ **Rentel** (www.rentel.be):
Gross capacity: **309 MW**
Net for Elicio: **38.59 MW** (12,5%)

2 wind farms under construction in the **Belgian North Sea**

✈ **Norther** (www.norther.be):
Gross capacity: **370 MW**
Net for Elicio: **184.8 MW** (50%)

✈ **Seamade** (www.otary.be):
Gross capacity: **478.2 MW**
Net for Elicio: **42.63 MW** (8,75%)

A portfolio of offshore wind energy projects

✈ **France:** Dunkerque in tender phase

IN TOTAL (Rentel):

THE CURRENT WIND FARM GENERATES **1,175,000** MWh/YEAR GROSS

TOTAL INSTALLED (GROSS) POWER

309 MW

ELICIO POWERS THE EQUIVALENT OF

335,000 HOUSEHOLDS PER YEAR



BELGIUM – OPERATIONAL WIND FARMS

LOCATION	COMMISSIONED	POWER IN MW	% OF SHARES	TOTAL MW
ZEDELGEM	sep-01	1.8	100%	1.8
BRUGGE III	may-04	12.6	100%	12.6
GISTEL	may-07	2.3	100%	2.3
MIDDELKERKE	may-07	0.81	100%	0.81
BASTOGNE	feb-09	6	60%	3.6
IEPER	jul-09	4.6	100%	4.6
KALLO	jan-10	2.3	100%	2.3
MALDEGEM	dec-10	16.1	60%	9.66
BERLARE	dec-11	9.2	51%	4.69
PERWEZ II	feb-13	4	100%	4
MENEN	nov-13	4.6	50%	2.3
ARENDONK	nov-13	2.3	100%	2.3
BRUGGE IV	jul-16	2.3	100%	2.3
GENT	sep-15	2.3	100%	2.3
EVERGEM	nov-15	2.05	100%	2.05
ZELE	sep-17	4	100%	4
		77.26		61.61



77.26
MW



47,500
households/
year



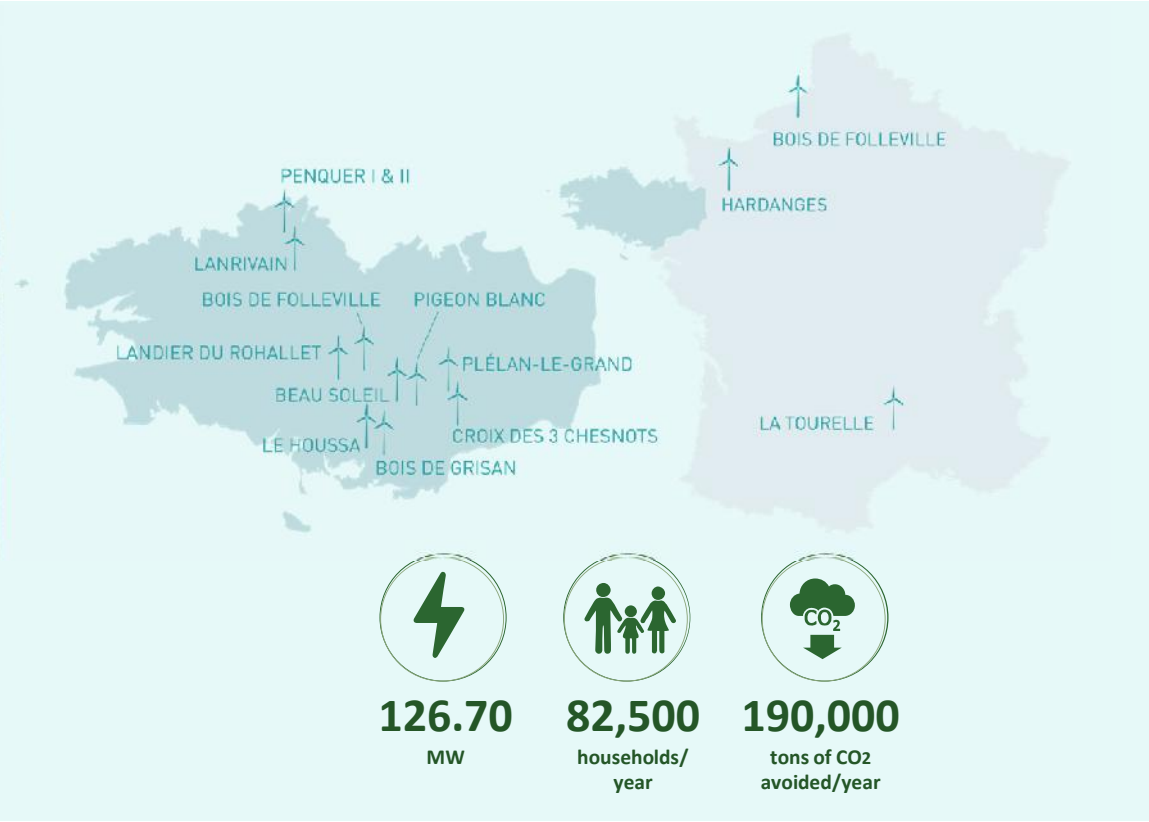
115,600
tons of CO2
avoided/year



FRANCE - OPERATIONAL WIND FARMS



LOCATION	COMMISSIONED	POWER IN MW	% OF SHARES	TOTAL MW
PLÉLAN-LE-GRAND	nov-08	12	65%	7.8
LA TOURELLE	aug-09	2.3	100%	2.3
LANRIVAIN	oct-09	8	100%	8
BEAU SOLEIL	may-10	10	100%	10
CROIX DES 3CHESNOTS	may-10	8	100%	8
PENQUER II	oct-10	4	40%	1.6
PENQUER I	oct-10	12	100%	12
PIGEON BLANC	nov-10	12	70%	8.4
LANDIER DU ROHALLET	dec-10	8	100%	8
BOIS DE FOLLEVILLE	oct-16	6.15	100%	6.15
FLERS-SUR-NOYE	apr-17	18	100%	18
BOIS DE GRISAN	okt-17	8	100%	8
LE HOUSSA	dec-17	8	100%	8
HARDANGES	feb-18	10.25	100%	10.25
		126.70		116.50





Internationally active in
the wind energy sector

Both in Belgium and internationally,
ELICIO is developing a portfolio of wind
projects with a total capacity of

954 MW

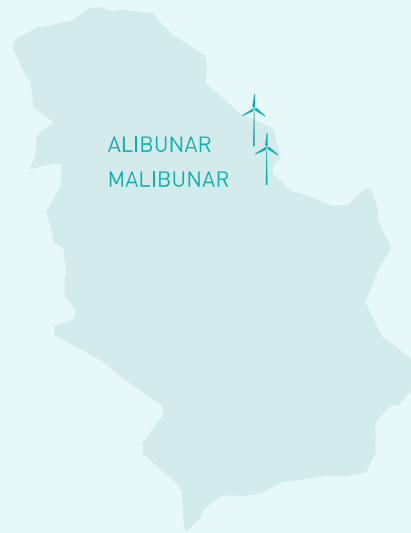




SERBIA – OPERATIONAL WIND FARMS



LOCATION	COMMISSIONED	POWER IN MW	% OF SHARES	TOTAL MW
ALIBUNAR	2018	42	100%	42
MALIBUNAR	2017	8	100%	8
		50		50



ALIBUNAR
MALIBUNAR

42
8
MW



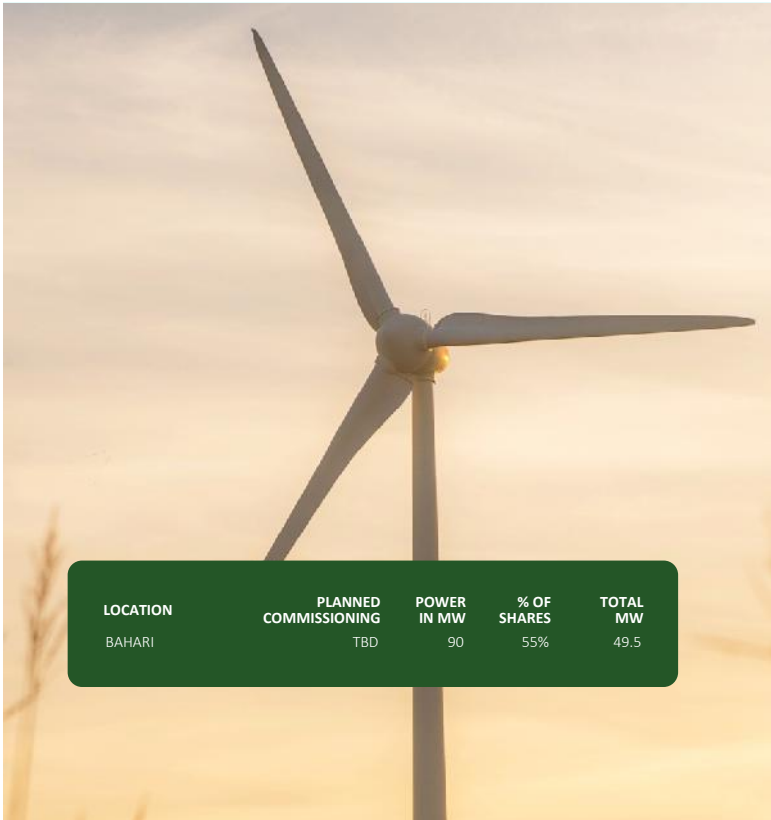
36,000
6,900
households/
year



88,200
16,800
tons of CO2
avoided/year



KENYA – WIND FARMS



LOCATION	PLANNED COMMISSIONING	POWER IN MW	% OF SHARES	TOTAL MW
BAHARI	TBD	90	55%	49.5



90
MW



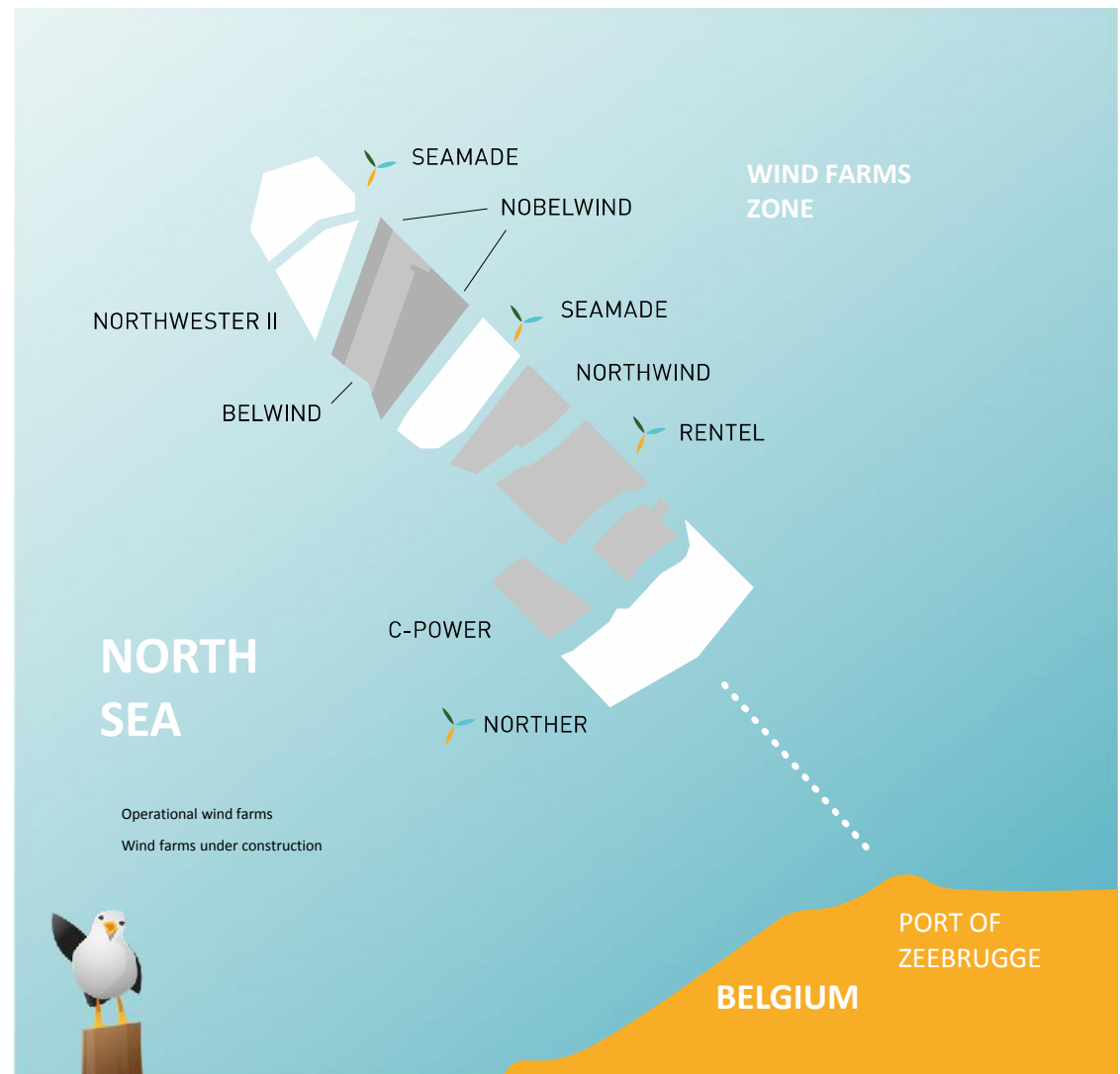
180,000
households/
year



190,000
tons of CO2
avoided/year



Offshore wind energy in the Belgian North Sea





NORTH SEA – OFFSHORE WIND FARMS

NORTHER

44 VESTAS 164-8.4 MW TURBINES
(22 FOR ELICIO | 50%)

370 MW GROSS CAPACITY
184.8 MW for ELICIO

400,000 HOUSEHOLDS POWERED/YEAR
200,000 FOR ELICIO

www.norther.be

RENTEL *

42 SIEMENS TURBINES SWT-7.35 MW-154
(5.25 FOR ELICIO | 12.5 %)

309 MW GROSS CAPACITY
38.59 MW for ELICIO

335,000 HOUSEHOLDS POWERED/YEAR
42,000 FOR ELICIO

www.rentel.be

(*) fully operational



223,39

MW



242,000

households/
year



387,000

tons of CO2
avoided/year





NORTH SEA - OFFSHORE WIND FARMS



SEAMADE 487,2 MW

ELICIO'S PARTICIPATION IN THE SEAMADE OFFSHORE PROJECT OF 487,2MW

Indirect participation	8,75 % or 42,63 MW for Elicio NV
Number of turbines	58 (in total)
Turbine type	Siemens SWT 8.4 MW – 167 m rotor
Households served	485.000 (in total)
CO₂ savings per year	> 500.000 tons
Start of production:	planned in 2020

Seamade NV is a partnership between Otary RS NV, Electrabel NV and Eneco Wind Belgium NV.

The Seamade project is the result of the merger of the projects previously known as Seastar and Mermaid.



Elicio NV (HQ)
John Cordierlaan, 9
8400 Ostend - Belgium

T. +32 (0)59 56 97 00
F. +32 (0)59 56 97 01

info@elicio.be
www.elicio.be

Elicio France SAS
30 Boulevard Richard Lenoir
75011 Paris - France

T. +33 (0)1 85 56 06 90
F. +33 (0)1 85 56 06 95

info@elicio-france.fr
www.elicio.be/fr

